



June 14, 2022

Loan Repayment Programs

Bureau of Health Workforce (BHW)

Malissa Lewis, LL.M | Chief | Loan Repayment Branch,
Division of National Health Service Corps



Agenda

- Health Resources and Services Administration Overview
- Substance Use Disorder Workforce Loan Repayment Program
- NHSC Rural Community Loan Repayment Program
- NHSC Substance Use Disorder Treatment & Recovery Loan Repayment Program
- Support and Resources
- Questions
- Connect



OVERVIEW

Health Resources & Services Administration (HRSA)

- Supports more than 90 programs that provide health care to people who are geographically isolated, economically or medically vulnerable
- HRSA does this through grants and cooperative agreements to more than 3,000 awardees, including community and faith-based organizations, colleges and universities, hospitals, state, local, and tribal governments, and private entities
- Every year, HRSA programs serve tens of millions of people, including people living with HIV/AIDS, pregnant women, mothers and their families, and those otherwise unable to access quality health care

HRSA AT A GLANCE



90
PROGRAMS



**SERVING TENS OF
MILLIONS OF PEOPLE**

3,000        **AWARDEES**



OVERVIEW

Bureau of Health Workforce (BHW)

- BHW improves the health of underserved populations by strengthening the health workforce and connecting skilled professionals to communities in need.
- We approach our grant awards, loan repayment, and scholarship programs as a continuum of education, training and service.
- Following this approach, we work to create a well-distributed and robust workforce supply of diverse, culturally competent health professionals who provide quality health care in high-need areas of the U.S. and its territories.
- Specifically, our scholarship and loan repayment programs help underserved communities recruit and retain primary health care providers.



OVERVIEW

Current SUD Clinicians



OVERVIEW

BHW SUD Loan Repayment Programs Funding



SUBSTANCE USE DISORDER WORKFORCE LRP

Applications
Received

1,091

New
Awards

900

FY 2021



RURAL COMMUNITY LRP

Applications
Received

698

New
Awards

603

FY 2021



SUBSTANCE USE DISORDER TREATMENT & RECOVERY LRP

Applications
Received

3,184

New
Awards

255

FY 2021



OVERVIEW

SUD Loan Repayment Programs Funding

- Since 2019, awardees received **\$331.2 million** in lump-sum loan repayment awards to pay off their qualifying health professional student loan debt.
- Of the more than **4,500 SUD providers**, 3,230 report that they have SUD treatment credentials with **45 STAR LRP** and **822 NHSC participants** reporting that they have a DATA 2000 waiver.
- These credentials and waivers demonstrate that these providers are trained in a comprehensive approach that incorporates medication and behavioral health counseling.

WE FUNDED MORE THAN 4,500 AWARDS TO SUD PROVIDERS

SINCE 2019
AWARDEES RECEIVED

**\$331.2
MILLION**

3,230

OF MORE THAN

4,500

SUD PROVIDERS

**HAVE SUD TREATMENT
CREDENTIALS**



822

NHSC
PARTICIPANTS



45

STAR LRP
PARTICIPANTS



HAVE DATA 2000
WAIVERS





SECTION 1

Substance Use Disorder Workforce Loan Repayment Program



SECTION 1

NHSC Substance Use Disorder Workforce LRP



AWARDS UP TO

\$75,000

3-YEAR SERVICE COMMITMENT

Must be trained and licensed to provide SUD treatment at
NHSC-approved rural SUD treatment facilities

*Expands and improves access to
quality opioid and substance use
disorder treatment in underserved
areas nationwide*



SECTION 1

NHSC Substance Use Disorder Workforce LRP

PRIORITY IS GIVEN TO APPLICANTS WHO

- Have an X-waiver;
- Serve in an opioid treatment program; or
- Have a license or certification in substance use disorder interventions, such as master's-level substance use disorder counselors.



Must be a U.S. citizen or national working at an NHSC-approved substance use disorder (SUD) treatment facility



Eligible Providers: Medicine: MD, DO, NP, CNM, PA; Mental/Behavioral Health: HSP, LCSW, PNS, MFT, LPC; Substance Use Disorder Counselors; Registered Nurses Pharmacists



Must be trained and licensed to provide SUD treatment



Must have unpaid government or commercial loans for school tuition, reasonable educational and living expenses, segregated from all other debts





SECTION 2

Rural Community Loan Repayment Program



SECTION 2

NHSC Rural Community Loan Repayment Program



AWARDS UP TO

\$100,000

3-YEAR SERVICE COMMITMENT

Must be trained and licensed to provide SUD treatment at
NHSC-approved rural SUD treatment facilities

***Expands and improves access to
quality opioid and substance use
disorder treatment in rural areas***



SECTION 2

NHSC Rural Community Loan Repayment Program

PRIORITY IS GIVEN TO APPLICANTS WHO

- Serve at an Rural Communities Opioid Response Program (RCORP) Consortium Member facility;
- Have an X-waiver;
- Have a license or certification in substance use disorder interventions, such as master's-level substance use disorder counselors.



Must be a U.S. citizen or national working at an NHSC-approved rural substance use disorder (SUD) treatment facility



Eligible Providers: Medicine: MD, DO, NP, CNM, PA; Mental/ Behavioral Health: HSP, LCSW, PNS, MFT, LPC; Substance Use Disorder Counselors; Registered Nurses; Pharmacists; Nurse Anesthetists



Must be trained and licensed to provide SUD treatment



Must have unpaid government or commercial loans for school tuition, reasonable educational and living expenses, segregated from all other debts



SECTION 2

Medications for Opioid Use Disorder (MOUD) Training

We partnered with the Substance Abuse and Mental Health Services Administration's (SAMHSA) Providers Clinical Support System (PCSS) to connect clinicians to free MOUD training.

Are you eligible for the free training?

You are eligible for MOUD training (and the X-waiver) if you have an active *Drug Enforcement Administration (DEA) number to dispense controlled substances and are one of the following:

- Physician (MD/DO)
- Nurse practitioner (NP)
- Physician assistant (PA)
- Certified nurse-midwife (CNM)
- Certified registered nurse anesthetist (CRNA)
- Medical students (in eligible disciplines)

Why should you complete MOUD training to obtain an X-waiver?

- Be a part of the solution to our nation's opioid epidemic.
- Help increase access to comprehensive SUD treatment in rural and underserved areas.
- Be a priority applicant for some NHSC programs.



Helps increase the number of Drug Addiction Treatment Act of 2000 (DATA 2000) Waiver-certified clinicians in high-need communities.

*Applying for your DEA number only takes a few moments.
Visit <https://apps.dea diversion.usdoj.gov/webforms/> to learn more.





SECTION 3

Substance Use Disorder Treatment & Recovery Loan Repayment Program (STAR LRP)



SECTION 3

BHW Substance Use Disorder Treatment & Recovery LRP



AWARDS UP TO

\$250,000

6-YEAR SERVICE COMMITMENT

Must be trained and licensed to provide SUD treatment at STAR LRP-approved SUD treatment facilities.

Expands the eligible pool of disciplines and treatment facilities and supports SUD treatment teams.



SECTION 3

BHW Substance Use Disorder Treatment & Recovery LRP

ADDITIONAL DISCIPLINES INCLUDE:

Behavioral Health Paraprofessionals

- Community Health Workers
- Peer Recovery Specialists
- Case Managers
- Health Navigators

Clinical Support Staff

- Clinical Nurse Specialist (CNS)
- Certified Nursing Assistant (CNA)

- Licensed Practical Nurse (LPN)
- Licensed Occupational Therapists
- Medical Assistants

Other

- Psychology Doctoral Interns
- Other Paraprofessionals



Must be a U.S. citizen or national working at an NHSC-approved rural substance use disorder (SUD) treatment facility



Eligible Providers: Medicine: MD, DO, NP, CNM, PA; Mental/Behavioral Health: HSP, LCSW, PNS, MFT, LPC; **Substance Use Disorder Counselors; Registered Nurses; Pharmacists; Nurse Anesthetists**



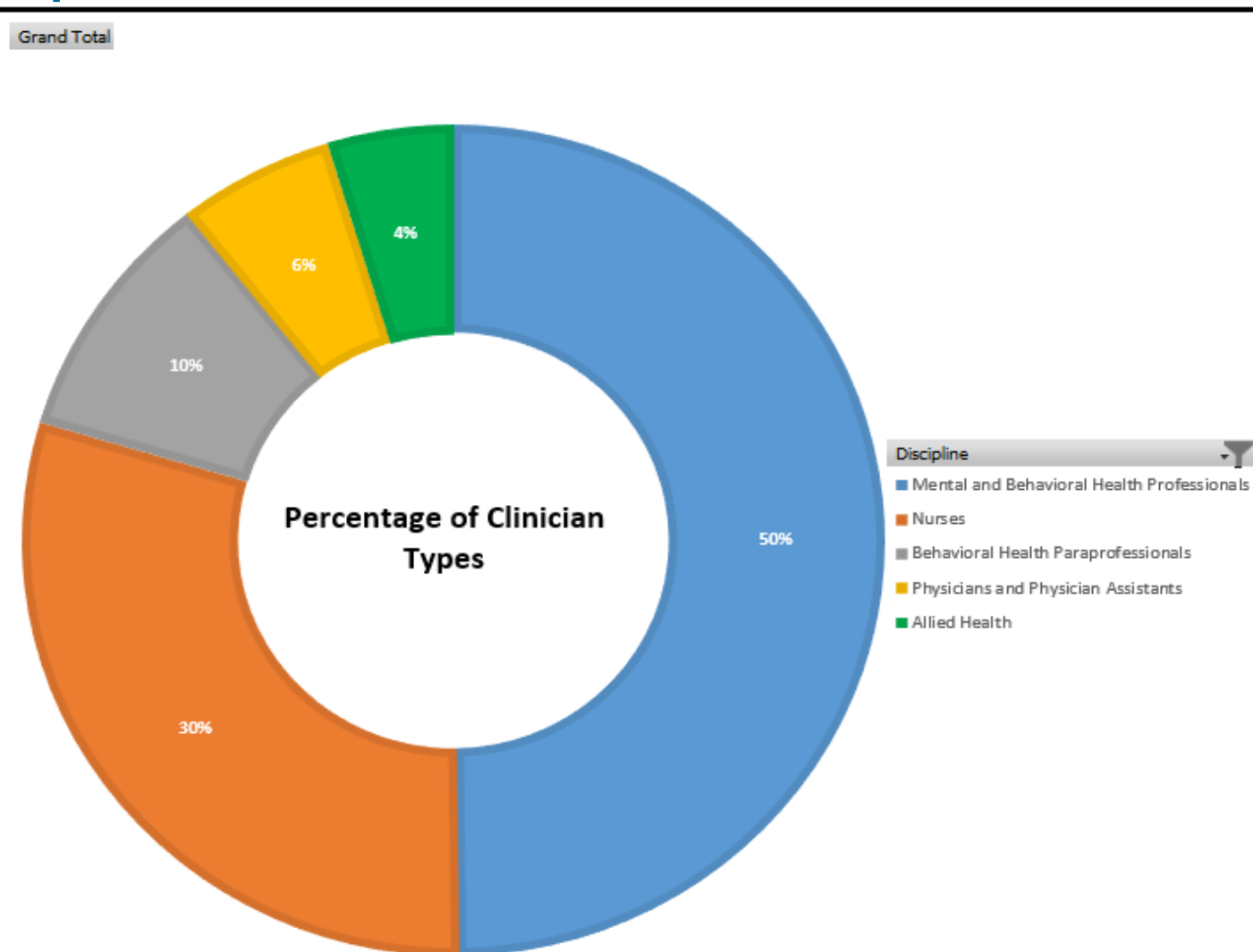
Must be trained and licensed to provide SUD treatment

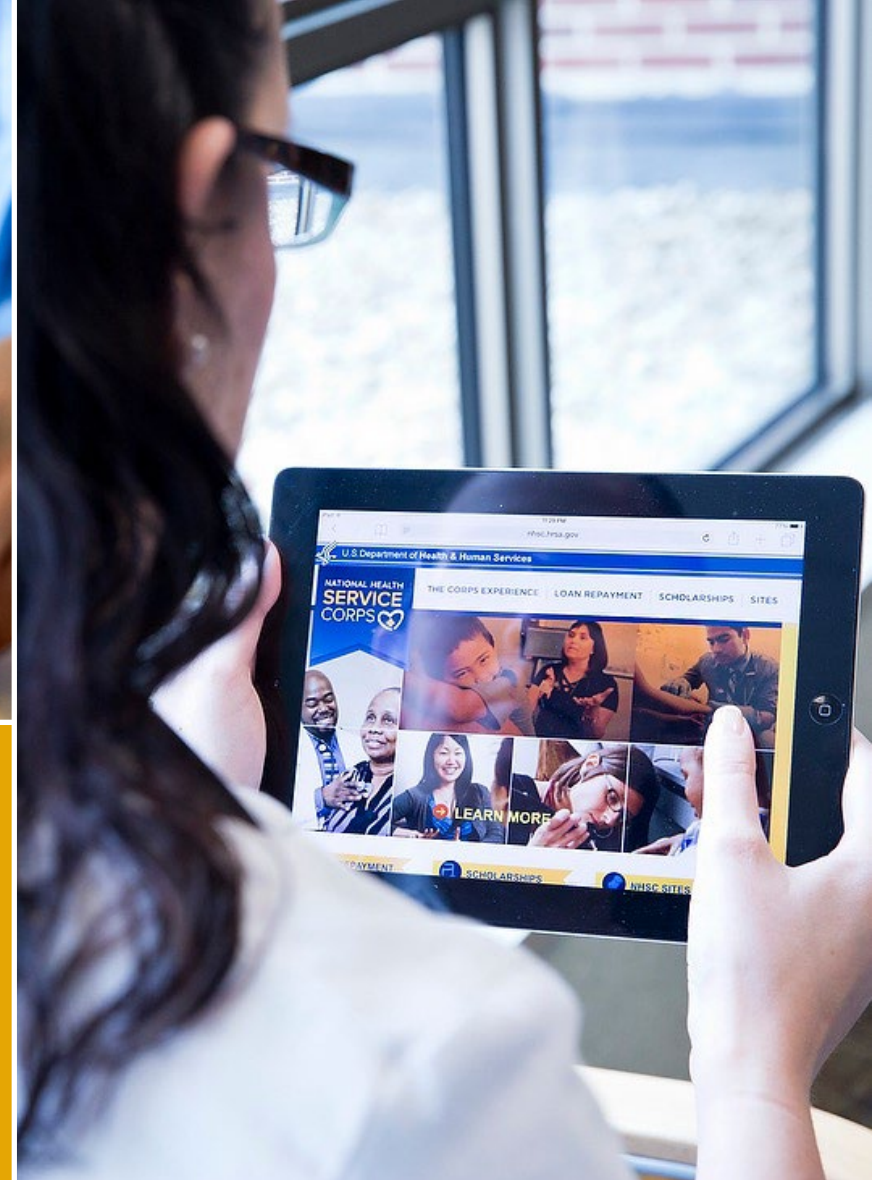


Must have unpaid government or commercial loans for school tuition, reasonable educational and living expenses, segregated from all other debts

STAR LRP Awards by Discipline

Discipline	Grand Total	Percent of Grand Total
Mental and Behavioral Health Professionals	127	50%
Nurses	76	30%
Behavioral Health Paraprofessionals	25	10%
Physicians and Physician Assistants	15	6%
Allied Health	12	4%
Grand Total	255	100%
Mental and Behavioral Health Professionals	127	50%
SUD Counselors	70	27%
Licensed Professional Counselors	32	13%
Licensed Clinical Social Workers	23	9%
Psychologist	2	1%
Nurses	76	30%
Licensed Practical Nurse	19	7%
Registered Nurse	23	9%
Nurse Practitioner	34	13%
Behavioral Health Paraprofessionals	25	10%
Health Navigators	2	1%
Community Health Workers	2	1%
Peer Recovery Specialists	4	2%
Behavioral Health Paraprofessional	1	1%
Case Managers	16	6%
Physicians and Physician Assistants	15	6%
Osteopathic Physicians	3	1%
Allopathic Physicians	9	4%
Physician Assistant	3	1%
Allied Health	12	4%
Licensed Occupational Therapists	3	1%
Certified Medical Assistants	5	2%
Pharmacists	4	2%





SECTION 4

Support & Resources



SECTION 4

Other Loan Repayment and Scholarship Programs



Original Loan Repayment Program



Substance Use Disorder Workforce Loan Repayment Program



Rural Community Loan Repayment Program



Students to Service Loan Repayment Program



Scholarship Program



State Loan Repayment Program



Loan Repayment Program*



Scholarship Program

*Includes eligible Nurse Faculty



Native Hawaiian Health Scholarship Program



Faculty Loan Repayment Program



Scholarships for Disadvantaged Students



Nurse Faculty Loan Repayment Program

SECTION 4

About Nurse Corps

Nurse Corps helps to address shortages of nurses across the country through:

- loan repayment to nurses who work in facilities experiencing a critical shortage of nurses,
- loan repayment to nurse faculty, and
- scholarships to students enrolled—or accepted for enrollment—in nursing degree programs.



**LOAN REPAYMENT
PROGRAM**



**SCHOLARSHIP
PROGRAM**



SECTION 4

NHSC-approved Sites & SUD Treatment Facilities

CRITERIA

- NHSC clinicians serve at approved sites throughout the nation.
- NHSC-approved sites are outpatient facilities providing primary care medical, dental, and/or mental and behavioral health services.
- The facility may be located in a rural, urban or tribal community.
- To apply to become an NHSC site, the facility must be an eligible site type and meet applicable requirements.
- NHSC-approved sites and SUD treatment facilities must be located in a Health Professional Shortage Area.



SECTION 4

NHSC Eligible Site Types

- Federally Qualified Health Centers
 - Community Health Center
 - Migrant Health
 - Homeless Program
 - Public Housing Program
 - School-Based Program
 - Correctional or Detention Facilities (Federal/State/Immigration and Customs Enforcement)
 - Mobile Clinic
- FQHC Look-Alikes
- Indian Health Service Facilities
- Certified Rural Health Clinics
- Critical Access Hospitals
- Community Mental Health Centers
- State or Local Health Departments
- Community Outpatient Facilities
 - Hospital Affiliated
 - Non-Hospital Affiliated
- Private Practices (Solo & Group Practice)
- School-Based Clinics
- Mobile Clinics
- Free Clinics
- Substance Use Disorder Treatment Facilities



SECTION 4

NHSC Eligible SUD Treatment Facilities

To be an NHSC-approved SUD treatment facility, sites must have demonstrated that they meet the requirements set forth in the NHSC Site Agreement and NHSC Site Reference Guide, including submission of SUD documentation.

- SAMHSA-certified opioid treatment programs (OTPs)
- Office-based opioid treatment facilities (OBOTs)
- Non-opioid substance use disorder treatment facilities (SUD treatment facilities)
- Federally Qualified Health Care Centers (FQHCs)
- Rural Health Clinics (RHCs)
- American Indian Health facilities
- FQHC Look-Alikes
- State or federal correctional facilities
- Critical Access Hospitals
- Community health centers
- State or local health departments
- Community outpatient facilities
- Private practices
- School-based clinics
- Mobile units and free clinics



SECTION 4

STAR LRP-approved SUD treatment facilities

A facility is eligible to become STAR LRP-approved if it meets at least one of the following requirements:

- Is located in a county with a three-year drug overdose death rate greater than the national average*; or
- Has a mental health HPSA (MHPSA) designation.

Find your county's 3-year overdose mortality rate

- Use our STAR LRP County Overdose Mortality Rate spreadsheet (XLSX - 194 KB)) to find out if your facility is in a county that meets the program's criteria (>21.6 deaths per 100,000)



Note: The STAR LRP uses the three-year average from the 2017-2019* Centers for Disease Control and Prevention (CDC) County Overdose Mortality Rate data to determine the rate for facility eligibility. The public-facing CDC data is a 5-year average.

*This average will be updated as CDC data becomes available.



SECTION 4

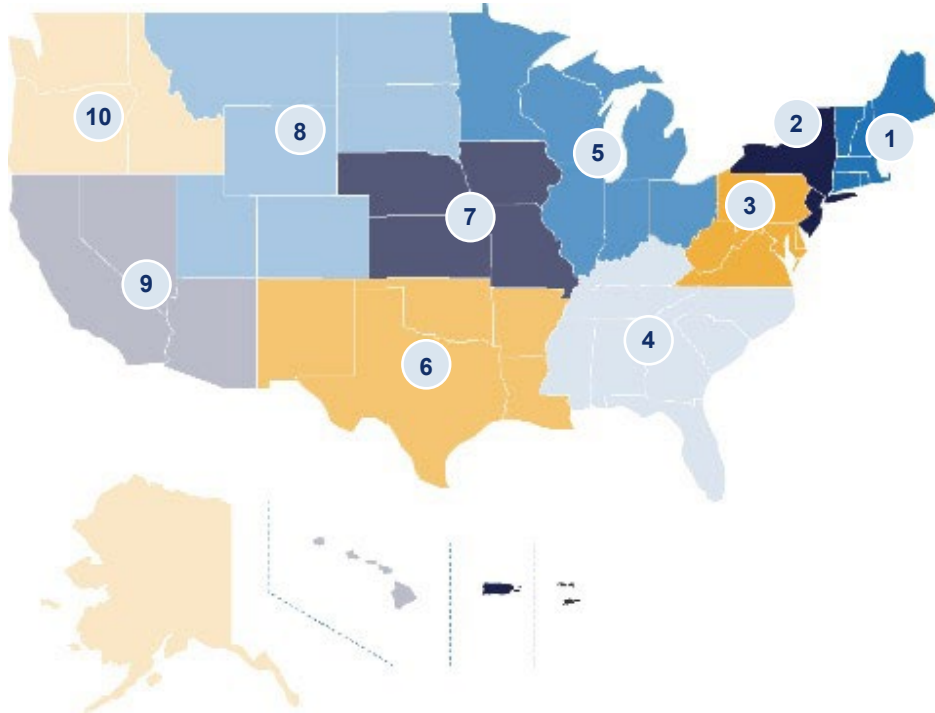
Eligible STAR LRP-approved facilities*

- American Indian Health facilities, including Indian Health Service (IHS) Hospitals
- Community Health Centers
- Community Mental Health Centers
- Community Outpatient Sites
- Crisis Stabilization Units
- Critical Access Hospital (CAH)
- Detoxification Facilities
- Emergency Department
- Faith-Based Settings
- Federally Qualified Health Care Centers (FQHCs)
- FQHC Look-Alikes
- Free Clinics
- Health System- Affiliated
- Inpatient Treatment Center
- Inpatient Psychiatric Facilities (IPFs)
- Inpatient Rehabilitation
- Local Community Jails and Detention Centers
- Migrant Health Center
- Mobile Units
- Non-Opioid SUD Treatment Facilities
- Opioid Treatment Programs (OTPs)
- Office-Based Opioid Treatment (OBOTs)
- Outpatient Rehabilitation
- Prevention Coalitions or Agencies
- Private Practices
- Recovery Centers
- Rural Health Clinics (RHCs)
- School-Based Clinics
- State or Federal Correctional Sites
- State or Local Public Health or Human Services Department
- Veterans Administration (VA) Facilities
- Youth Detention Center or Program



SECTION 4

DRO Regional Offices



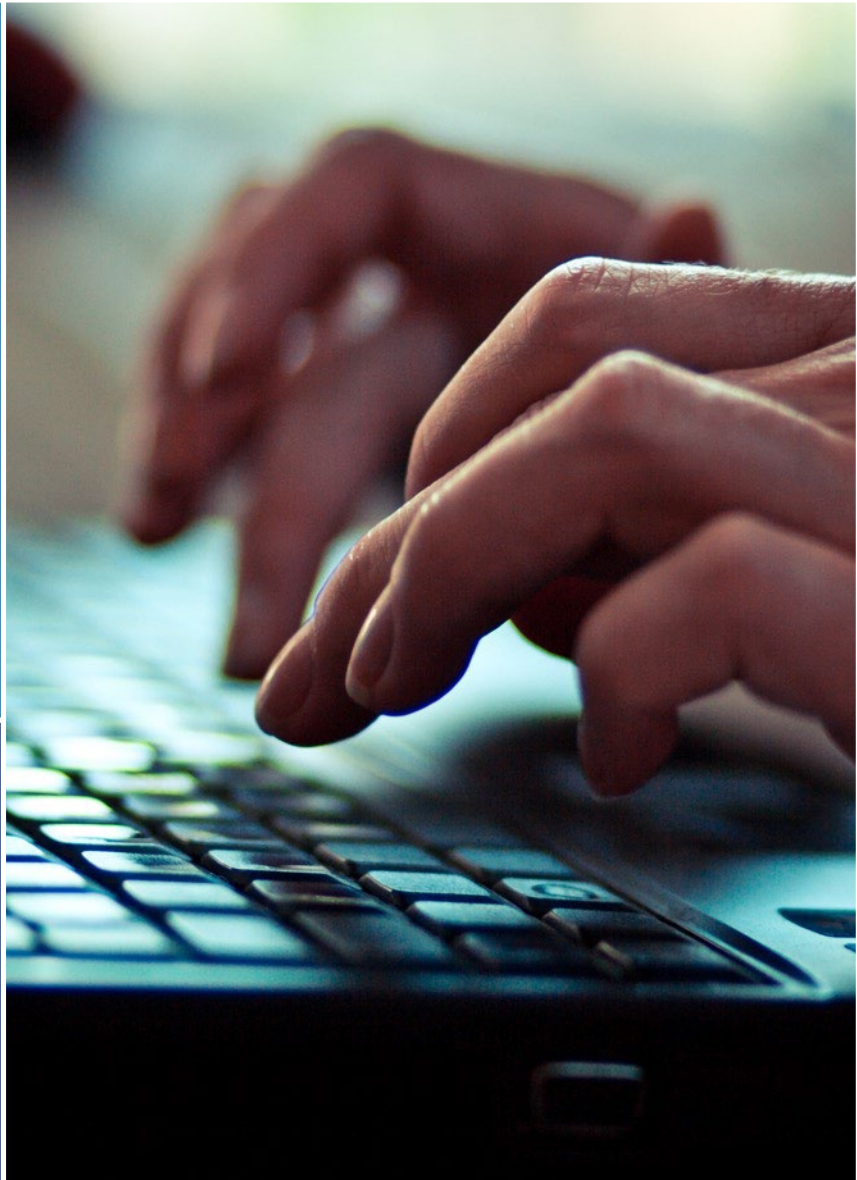
SUPPORT FOR PROVIDERS

- Support for you in your region
- Dedicated BHW staff located in 10 regional offices provide dedicated contacts for your area.
- Find your contact on the NHSC website

REGIONS

- | | |
|-----------------|------------------|
| 1. Boston | 6. Dallas |
| 2. New York | 7. Kansas City |
| 3. Philadelphia | 8. Denver |
| 4. Atlanta | 9. San Francisco |
| 5. Chicago | 10. Seattle |





Connect



CONNECT

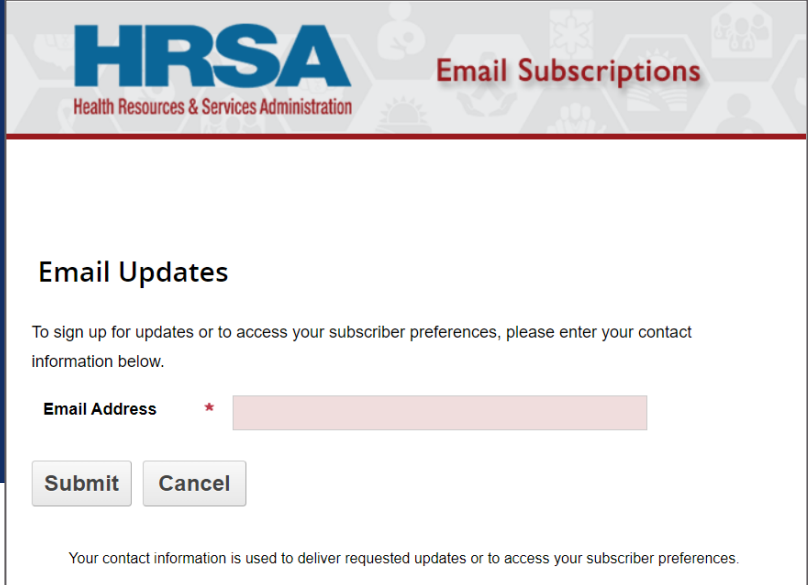
Website & Email Signup

SUD LOAN REPAYMENT PROGRAMS ON THE WEB

- nhsc.hrsa.gov/loan-repayment
- nhsc.hrsa.gov/sites
- bhw.hrsa.gov/star-lrp
- bhw.hrsa.gov/star-lrp-facilities

SIGN UP TO RECEIVE NOTIFICATIONS INCLUDING UPDATES, APPLICATION OPENINGS & SUPPORT

<https://public.govdelivery.com/accounts/USHSHRSA/subscribe/new?qsp=HRSA-subscribe>



The screenshot shows the HRSA (Health Resources & Services Administration) Email Subscriptions sign-up form. The header features the HRSA logo and the text "Email Subscriptions". Below the header, the section is titled "Email Updates". A message states: "To sign up for updates or to access your subscriber preferences, please enter your contact information below." There is a text input field labeled "Email Address" with a red asterisk indicating it is required. Below the input field are two buttons: "Submit" and "Cancel". At the bottom of the form, a small disclaimer reads: "Your contact information is used to deliver requested updates or to access your subscriber preferences."



CONNECT

Connect with HRSA

Learn more: [HRSA.gov](https://www.hrsa.gov)

Sign up for HRSA eNews: 

Follow us:     





Questions

