



2022

**NABH ANNUAL
MEETING**

*SHAPING THE FUTURE OF
BEHAVIORAL HEALTHCARE*

EXHIBITOR AND SPONSOR GUIDE

A guide to the latest products and services for behavioral healthcare leaders



Reach out to the leader in mental health and addiction treatment

For more than 110 years, Rogers Behavioral Health has been fulfilling its not-for-profit mission of changing lives with gold standard mental health and addiction care. At Rogers, patients have direct access to one of the largest teams of nationally recognized psychiatric experts who draw on decades of experience and research to help people find their path to recovery.

If you know someone struggling with mental health or addiction, reach out to the leader in effective treatment and compassionate care. Reach out to Rogers Behavioral Health.

ROGERS
Behavioral Health

rogersbh.org
800-767-4411



Ligature Resistant Product Specialists

Your Partners in Patient Safety

Working collaboratively with some of the world's leading behavioral health organizations, Kingsway continuously innovate at the forefront of ligature resistant product design and manufacture.

De-risking for our clients at every stage.

Find out more — kingswaygroupusa.com

**Are you looking to
reduce risk in your
behavioral health
environment?**

Whether you're
designing, building
or running a project
— our expert team
are here to help.



VISIT OUR STAND TO FIND OUT MORE



THE INDUSTRY LEADER

IN LIGATURE RESISTANT PRODUCTS

Behavioral Safety has an unwavering commitment to the safety and humanity of patients' lives. Our passion is to save patients' lives while improving the quality of their environment. With a foundation of over forty-five years of field experience, we specialize in the design of exclusive ligature-resistant building products that are at the forefront of the behavioral industry to aid in suicide prevention. It is our goal to furnish our customers with quality products and excellent service.

Visit our website
besafepro.com
for a full listing of:

Products

Instructional Videos

BIM Files

Technical Resources

INNOVATION NEVER RESTS

besafepro.com



**BEHAVIORAL
SAFETY**



Sina Nikayin, MD

Amber Childs, PhD

Frank Fortunati, MD, JD

Advancing behavioral health with the greatest of care.

From clinical research to caring for the most diverse patient population, leadership and innovation are hallmarks of Yale New Haven Psychiatric Hospital. In affiliation with Yale School of Medicine's Department of Psychiatry, we pioneered using ketamine infusions for treatment-resistant psychiatric disorders. Our clinical team first documented the association between a prior psychiatric diagnosis with COVID-19–related inpatient mortality and supported colleagues worldwide to build that knowledge base. Today, we are at the forefront of exploring psychedelic therapeutics for major depressive disorder and severe anxiety. With every step, we stay focused on our goal to deliver the continuum of services to meet every patient's unique need—with the greatest of care.

YaleNewHavenHealth
Yale New Haven Psychiatric Hospital



AQUADESIGN
MANUFACTURING

SAFETY IN DESIGN

SAFE - HEALING - NON-INSTITUTIONAL - ROBUST



www.AquaDesignMfg.com

Full Product Line

Technical Information

BIM Files

Patient Room Sinks - Communal Room Sinks
Flush Valves - Toilets - Bath Tubs - Urinals
Shower Heads - Shower Controls - Quick
Connect Handheld Showers - Mirrors - Toilet
Roll Holders - Shelves - Floor Drains - Shower
Pans - Water Management



Partnerships to Drive Performance Excellence

Inpatient and Outpatient Solutions and Expertise



For behavioral health hospitals, CPS® partnerships drive financial, operational, and clinical success through their pharmacies.

We empower healthcare organizations to advance the standard of care by:

- Implementing best practices and proprietary technologies to drive value and enhance the patient experience
- Leveraging a deep bench of subject-matter experts
- Continually improving the way healthcare is delivered
- Driving performance to reduce costs, increase revenues, and elevate the status of internal leaders and teams

Let's discuss ways to drive value and performance for your patients, caregivers, and staff!



**Pharmacy
Management**



**Specialty and
Ambulatory Pharmacy**



**Pharmacy
Consulting**



**340B Program
Solutions**



Telepharmacy



**Supply Chain and
Materials Management**



**PT, OT, ST
Rehabilitation**



**Behavioral
Health**



TABLE OF CONTENTS

NABH is pleased to provide this 2022 NABH Annual Meeting *Exhibitor & Sponsor Guide*. It is intended to help those who own, operate, and manage mental health and addiction treatment systems and facilities nationwide find valuable, specialized resources to serve their patients and communities better. We appreciate the support from the exhibitors, sponsors, and advertisers who provided information in this publication.

AquaDesign Mfg.	04, 08, 26	On Call Health	26, 34, 36
Bamboo Health	08, 27, 47	Orexo – Digital Therapeutics	11, 26, 34, 35
Behavioral Safety	02, 08, 26	Oxehealth	26, 30, 35
Brookhaven Hospital – Neurologic Rehabilitation Institute	08, 26, 29	PharMerica Hospital Pharmacy Services	26, 35, 41
CannonDesign	18, 26, 46	Pinnacle Treatment Centers	27
CenterPointe Hospital	33	Pinpoint, Inc.	26, 32, 35
Cerner Corporation	14, 18, 26	Pyrce Healthcare Group	09, 27, 43
CPS	05, 18, 26	RAO Contract Sales, Inc.	26, 28, 43
The Door Switch	19	Relias	26, 37, 43
Health Care Systems	18, 24, 26	Rogers Behavioral Health	Inside Front Cover
Iris Telehealth	18, 23, 26	Rutgers University Behavioral Health Care, UBHC	27, 43, 48
Janssen Pharmaceutical Companies of Johnson and Johnson, Inc./Johnson & Johnson Healthcare Systems, Inc.	18, 27, 49	Sheppard Pratt	27, 38, 43
JDj Healthcare Consultants & Recruiters	07, 19, 27	Sherwood Windows Group	25, 26, 44
Kingsway Group USA	01, 19, 26	Sizewise	Back Cover
LearnWell and Comprehensive Counseling	12, 19, 26	Streamline Healthcare Solutions	26, 42, 44
McLean Hospital	21, 27, 33	Stryker Medical	10, 26, 44
Medsphere Systems Corporation	22, 26, 33	TaraVista Health Partners	35
Moore Medical Group	17, 26, 34	TownSteel, Inc.	26, 31, 44
Netsmart	16, 26, 34	Videra Health	20, 26, 44
ObservSMART	13, 26, 34	Wellsky	26, 40, 44
Odd Ball Industries	26, 34, 39	Whitehall MFG	15, 26, 45
		Yale New Haven Psychiatric Hospital	03, 27, 45

Many thanks to our 2022 Annual Meeting exhibitors and sponsors, who are featured in the center spread of this guide.

Custom Consulting

Executive Search

**Behavioral Health Providers & Private Equity Firms
Need Unicorns**



***Find the Impossible
with JDi's
Unique Stable of Services***

**“ Your reputation is stellar
and your delivery is outstanding. ”**



833-JDi4You (534.4968)



info@jeridavis.com



www.jeridavis.com

AQUADESIGN MFG.

AquaDesign Mfg. offers a unique range of products designed exclusively for mental health facilities and rehabilitation centers. Our suite of products strive to be the most effective and failsafe ligature resistant solutions available worldwide. The design of our products reflects a new vision and philosophy for mental health facilities that is rooted in hope, healing and recovery. Please contact us with any questions/feedback at: AquaDesign Mfg., 1748 West Fillmore Street, Phoenix, Arizona 85007, www.AquaDesignMfg.com, (800) 999-3101, Info@AquaDesignMfg.com.

BAMBOO HEALTH

Bamboo Health (formerly Appriss Health + PatientPing) is a healthcare technology solutions company, focused on care collaboration across the continuum of care. As one of the largest, most diverse care collaboration networks, our solutions equip healthcare providers and payers with information and insights to facilitate whole person care across the physical and behavioral health spectrums. By serving 2,500 hospitals, 8,000 post-acute facilities, 25,000 pharmacies, 37 health plans, 45 state governments, and over one million acute and ambulatory providers through more than 500 clinical information systems, we impact over 1 billion patient encounters annually in provider workflow. Visit us at www.bamboohhealth.com.

BEHAVIORAL SAFETY

Behavioral Safety has an unwavering commitment to the safety and humanity of patients' lives. With a foundation of over forty-five years of field experience, we specialize in designing exclusive ligature-resistant building products at the forefront of the behavioral industry to aid in suicide prevention. Our passion is to save patients' lives while improving the quality of their environment, and our goal is to furnish our customers with quality ligature-resistant products and excellent service. To learn more about Behavioral Safety Products, visit us at besafeproduct.com. Sam Chapo - Business Development Manager, sam@besafeproduct.com, (678-346-8023).

BROOKHAVEN HOSPITAL - NEUROLOGIC REHABILITATION INSTITUTE

Brookhaven NeuroRehabilitation Network is able to address multiple levels of service from a secured in-patient environment (NRI at Brookhaven Hospital) through residential and community reintegration (CNR of Oklahoma/CNR of Iowa). Brookhaven Hospital holds a dual accreditation which makes Brookhaven the only free-standing licensed Psychiatric Hospital in the country to be fully accredited with the Joint Commission while also having a fully accredited CARF TBI Rehabilitation program. BNN treatment plans include intensive neurocognitive rehabilitation from an interdisciplinary team including PT/OT/ST and Language, Psychotherapy, Pharmacy, Psychiatry, Dietary/Nutrition, Internal Medicine, Nursing, and Social Work. Treatment will address cognitive deficits, including executive functioning, self-regulation of behavior, seizure management, substance abuse treatment, independent living, problem-solving, and discharge planning. Please visit Jason Pirtle, Director, at the booth or reach out to him as follows: Email: jpirtle@brookhavenhospital.com Work Cell: 918-640-1742. More information is available at traumaticbraininjury.net.



**National Behavioral Health
Consultation Services**

— ■ —
*Specialists in strategy,
market research, &
business development*



OUR CONTACTS

- Call us at: (630) 726-3388
- Email us at: jpyrce@pyrcehealthcare.com
- Read about us at: www.pyrcehealthcare.com

jpyrce@pyrcehealthcare.com



High security, **low height**



Spirit Select® Mental Health Bed

Mental Health departments can place unique demands on hospital employees. Stryker has worked to create a solution with features that help to satisfy these demands and increase security within these specific units when partnered with specialized hospital processes. In addition to the specialized security features that can be added to Spirit beds, all beds have a 10.75-inch low bed height. This low height helps to significantly reduce fall injuries and help accommodate patients to create a more secure sleeping environment.

- Features:**
- Security lockout:** restricts all bed functions to the patient
- Removable brake:** restricts bed movement
- Filled siderails, headboard and footboard:** reduce ligature points
- Non-removable parts:** patient safety

orexo

The Orexo digital therapeutics portfolio is powered by evidence in mental health and substance use generated with our partner GAIA

depres^{is}®



(depression)

- Twelve weeks of digital cognitive behavioral therapy-based content
- One of the most studied digital therapies in depression with eleven original trials in over 2,800 patients

VORV!DA®



(alcohol use management)

- Twenty-four weeks of digital cognitive behavioral therapy-based content
- Launched in 2020 under Enforcement Policy for Digital Health Devices for Treating Psychiatric Disorders During COVID19 Public Health Emergency

modia™



(opioid use disorder)

- Twenty-four weeks digital therapy for opioid dependence
- MODIA is not a substitution for a patient's medication or clinician counseling
- Launched in 2021 under Enforcement Policy for Digital Health Devices for Treating Psychiatric Disorders During COVID19 Public Health Emergency

For more information and to schedule a meeting, contact:

Catherine Hoy – Digital Therapeutics 862-260-7994 | cathy.hoy@orexo.com

depres^{is}® is not a healthcare provider and does not provide medical advice, diagnosis, or standalone treatment. If you need immediate medical attention, please contact your healthcare provider or go to the closest emergency room.

vorvida® is not a healthcare provider and does not provide medical advice, diagnosis, or treatment. If you need medical assistance, please contact a healthcare provider directly.

MODIA™ has not been evaluated by the FDA (not FDA-cleared) and is marketed under the FDA's digital health device emergency use guidance (136939). MODIA™ has not been clinically evaluated and may have unknown benefits and risks.

orexo

© 2022 Orexo US, Inc. DTX-00068



Find the Services You Need for Academic and Mental Health Counseling

LearnWell and Comprehensive Counseling LCSW are trusted resources for academic support for children and adolescents during behavioral health treatment and for outpatient mental health counseling for all ages.

In partnership with treatment facilities and school districts, LearnWell provides an integrated set of academic and mental wellness services for students and their families throughout the continuum of care. In affiliation with Comprehensive Counseling, a skilled and diverse group of licensed mental health professionals draws from a variety of therapeutic techniques and approaches to assist clients in addressing their treatment goals. Contact us today and let LearnWell and Comprehensive Counseling help you meet your academic and mental health needs.

LearnWell 



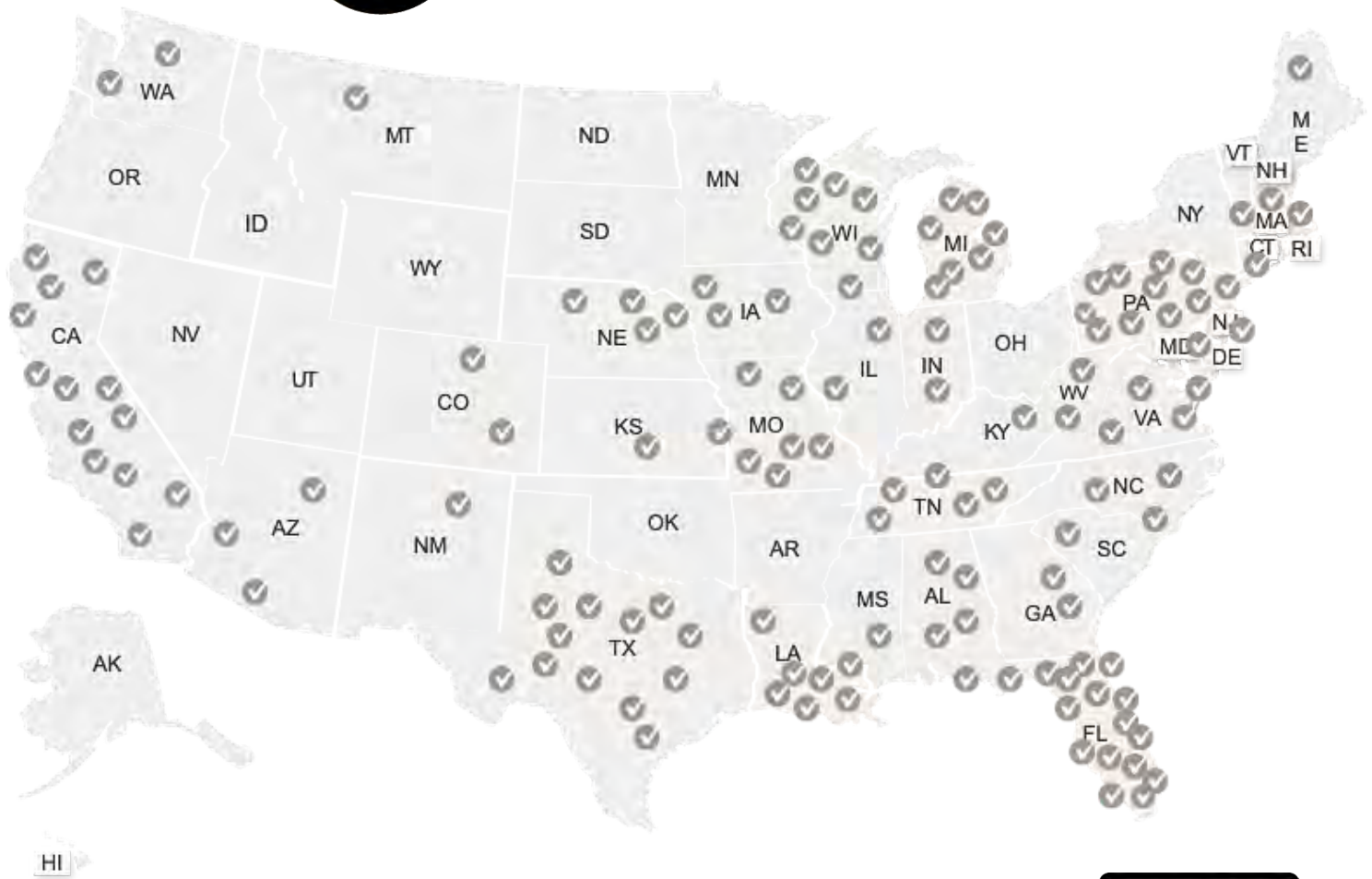
Comprehensive
Counseling LCSW
a LearnWell Company

www.learnwellservices.com | www.comprehensivecounselinglcsw.com | 877-732-9101

LEADING THE NATION

Over 300 Million Validated Observations

150 Facilities



ENSURING PATIENT SAFETY



- ✓ Validated Observations
- ✓ Ensures Proximity
- ✓ Nurse Rounds
- ✓ Detox Scales
- ✓ Vitals Documentation and Monitoring
- ✓ Environment of Care Rounds



Empowering those devoted to delivering healthcare and keeping people healthy

Helping providers and patients have a better healthcare experience with simplified workflows and innovative solutions is at the heart of what we do. We're committed to improving care for individuals and communities.

Visit cerner.com/solutions/behavioral-health to learn more.



© 2022 Cerner Corporation

INTRODUCING BestCare® Dignity Suites™

BestCare®
By Whitehall Manufacturing®

DESIGNED TO WORK AS A WHOLE



Create a peaceful, well-balanced environment with our line of ligature-resistant plumbing fixtures and accessories.



Whitehall Manufacturing
Manufacturer of Healthcare and Rehabilitation Products since 1946

www.whitehallmfg.com
Tel: (800) 782-7706 or (626) 968-6681
info@whitehallmfg.com



ADA



BARIATRIC

UNIVERSAL DESIGN
BIM/REVIT AVAILABLE

- **Universal Design**
Consistent across rooms;
accessible by all
- **Enhanced Aesthetics**
Less institutional stigma
- **Quick Installation**
Keep project on schedule
- **All-Inclusive Suites**
New Construction, Retrofit,
and ADA packages available

have
~~I wish I had~~ a
technology platform
that does it all.



- Addiction Treatment
- FQHC/Primary Care
- Inpatient Psychiatric
- Intellectual and Developmental Disabilities
- Mental Health
- Multi-State Provider Systems
- Recovery Support Services
- Specialty Hospitals
- Specialty Inpatient and Outpatient Programs

DO IT ALL WITH NETSMART.
Solutions and services for all of behavioral health

800.842.1973 ntst.com



Acute Psychiatric Hospitals and Residential Living Facilities



Improve the Quality of Patient Care and at Better Costs!

We are experts at Internal Medicine for Psychiatric & Behavioral Health Patients for more than 15 years serving in several states.

We have comprehensive solutions that can lower your overall costs and improve outcomes.

Our providers will go to your inpatient psychiatric hospital or residential treatment facility to provide comprehensive medical care and guidance on:

- ◆ Histories & Physicals
- ◆ Medical Consults
- ◆ Medication Management
- ◆ Infection Control
- ◆ Staff Continuing Education
- ◆ Process Quality Improvement
- ◆ Outpatient Integrated Follow-up Care through Caya Health



*All Ages
Children through
Senior Adults*

**Partner with us so you can focus on
your patients' psychiatric needs.**

www.MooreMedicalGroup.com
enquiries@mooremedicalgroup.com
407.732.7957



CANNONDESIGN

At CannonDesign, we exist for one important purpose: to help people continuously flourish. We design spaces and solutions that strengthen communities and empower equitable change for all, replacing barriers to care with boundless hope. Our dedicated mental and behavioral health practice has helped open doors to more than 6.5 million square feet of healing space in the last decade alone. With a portfolio that ranges widely in size and type—from state-operated hospitals and community-based centers to urban acute care operations—we partner with leading organizations to activate new models of care and position for what's next in mental healthcare. **Contact:** Timothy M. Rommel, AIA, MRAIC, ACHA, trommel@cannondesign.com, 716.228.4809, cannondesign.com.

CERNER CORPORATION

Cerner offers award-winning behavioral health technology that can help organizations serve individuals by providing a connected view of physical and mental health together. Our electronic health record helps providers deliver the level of care that successful treatment demands through clinical integration, client engagement, analytics and interoperability. For more information, please contact behavioralhealth@cerner.com.

CPS

Founded more than 50 years ago, CPS empowers healthcare organizations to advance the standard of care through a range of value-added solutions. We build partnerships that position healthcare leaders and teams to drive financial, operational, clinical, and regulatory performance excellence. Through our range of solutions, we position our partners to deliver an excellent patient care experience while transforming community healthcare. For more information: contactus@cps.com or 800.968.6962.

HEALTH CARE SYSTEMS, INC.

Health Care Systems (HCS), in business since 1983, provides certified electronic medical records, Clinician and Physician order entry solutions, Documentation, Assessments & Safety Check Modules and medication reconciliation care transition solutions with a particular emphasis on inpatient behavioral health systems, both institutional and private. Health Systems using the HCS Clinicals package on average demonstrate a 33% reduction in medication administration errors and a 45-percent reduction documentation time. For more information visit www.hcsinc.net or call 334-279-9711.

IRIS TELEHEALTH

Iris Telehealth is a leading provider of telepsychiatry services for health systems, IDNs, hospitals and community health centers across the United States. We strive to deliver clinically-sound and financially-sustainable telepsychiatry in order to help our partners meet their behavioral health goals and save their communities. For more information, please visit our website at www.iristelehealth.com.

JANSSEN PHARMACEUTICAL COMPANIES OF JOHNSON AND JOHNSON, INC./JOHNSON & JOHNSON HEALTHCARE SYSTEMS, INC.

At Janssen, we're creating a future where disease is a thing of the past. We're the Pharmaceutical Companies of Johnson & Johnson, working tirelessly to make that future a reality for patients everywhere by fighting sickness with science, improving access with ingenuity, and healing hopelessness with heart. In Janssen Neuroscience, we continue the mission of our namesake, Dr. Paul Janssen, whose discoveries transformed treatment and care for people with serious mental illness. We work to heal minds and restore hope for adults living with serious brain disorders. We collaborate with healthcare professionals, caregivers and those living with psychiatric and neurological disorders, including schizophrenia, mood disorders, and multiple sclerosis,

to improve health outcomes and advance solutions that address critical needs. Learn more about these efforts at www.janssen.com/neuroscience. Follow us at www.twitter.com/JanssenUS.

JDI HEALTHCARE CONSULTANTS & RECRUITERS

In this highly competitive behavioral health recruitment environment, you need top-notch executives. JDi is the industry leader and trusted search partner for **NABH** members for the last 33+ years, **bringing top talent to top treatment centers, and helping fill critical executive and C-Suite positions confidentially and quickly.** If you need strategic advisory or key introductions, we are also here to consult. JDi is the exclusive source for integrating success which we call- **3 POINTS of the ARROW -the right people, the right strategic direction, and the right connections.** Jeri Davis, MBA, JDi President & Founder, is a highly respected national speaker, and author. The JDi Team is standing by. Let's talk today! CALL: 833-JDi4You (594.4968), Email: info@jeridavis.com, Learn more: www.jeridavis.com.

KINGSWAY GROUP USA

Kingsway Group are proud to be a market leaders in creating innovative products designed for the most demanding healthcare environments since 2010. This means listening to partners specific needs and using considerable design, innovation and manufacturing expertise to deliver a best value solution to exceed expectations. Be it complete door eco-systems, secure vision panels or anti-ligature washroom range every product is designed with patient and staff safety in mind. From placing an initial enquiry to delivering your order, Kingsway Group prides itself on our service levels and creating happy customers. Visit our stand to find out more or visit kingswaygroupusa.com.

LEARNWELL AND COMPREHENSIVE COUNSELING

LearnWell helps behavioral health hospitals by providing high-quality educational programs for school-age

patients. Working closely with your team and the school district, we customize each patient's studies to keep them on track academically. We help normalize the patient experience, making integration of the educational component as seamless as possible. Since 1995, we have delivered over a million teaching hours in more than 200 US healthcare units. Our programs are typically low- or no-cost to your healthcare organization. LearnWell's affiliate, Comprehensive Counseling LCSW, has long been a trusted resource for quality mental health care: Generations of individuals, families, and couples have received counseling at Comprehensive's offices since 1976. Today, the company's multilingual and multicultural clinicians at 8 locations throughout the Greater New York City region offer counseling services using a variety of therapeutic approaches. Find out more about LearnWell and its educational programs for school- age patients – visit www.learnwellservices.com. To learn more about Comprehensive Counseling's services for individuals, visit www.comprehensivecounselinglcs.com.



Life More Secure.

11772 Westline Industrial Drive

St. Louis, MO 63146

(877) 998-5625

The Door Switch™ is an over-the-door ligature-resistant product for Behavioral Healthcare Facilities.

The Door Switch™ provides a distinctive alert solution to enhance in-room resident safety at a critical time. During private time, though the hallway and restroom doors provide privacy, they can also pose a threat for those who may be considering self-harming activities.

Until now, the only solution for this threat has been the removal of the door or other invasive means that often diminish both dignity and respect. **The Door Switch™** changes this problematic situation by helping to mitigate the risk that can go hand-in-hand with privacy. It alerts the staff immediately, visually and audibly, if a resident's door is being used as an over-the-door ligature point. It also creates a time-stamped audit trail event log.

A patented over-the-door ligature-resistant product. US Patent N0, RE42,991 and RE44,039.

You may visit our website at www.thedoorswitch.com.

Videra delivers personalized care at scale, without draining your resources:



Anytime, anywhere video check-ins

Bring the power of an office visit to your patient's smartphone. Videra makes it easy for patients to record responses for check-ins, follow-ups and customized assessments. Crisis doesn't wait for it's next appointment, so why not give your patients a way to feel heard and understood anytime, anywhere? That's the power of Videra.

AI-Assisted Analysis

Videra Health's sophisticated AI technology and algorithms automatically analyze patient language, audio, and video without the extra staff hours needed to gather, organize, and report it. This enables you to do more of what you do best, provide incredible treatment.

Tailored alerts

Set customized thresholds that trigger alerts when patient follow-ups require your attention - eliminating the need to call each person individually. Spend more time treating the patients that need it the most.



Powerful, Insightful Analytics

Videra's analytics provide deep insight at both the patient and population level. In an instant you can see current status, changes over time and overall response to treatment. Patient care becomes efficient, precise, and driven by data captured in real life. AI-powered trend analysis & analytics augment clinical expertise and save the immense amount of staff hours it normally takes to gather and analyze the longitudinal data they need to inform clinical decisions and treatment recommendations.

FDA Approved, Payer Reimbursed

Videra is an FDA approved medical device and is recognized by the major health insurance payers. As a provider, you are able to receive reimbursement for each eligible remote patient monitoring session you complete with your patients.

Validated Patient Assessments and Measurements - Now Automated

Videra automates and administers your ideal protocols; anything from frequent patient check-ins to more detailed treatment follow-ups, assessments and screens. Customize programs for your clinic/facility or use the Videra library, which houses standard programs such as GAD-7 or PHQ-9.

viderahealth.com

contact@viderahealth.com

PUTTING PEOPLE FIRST IN MENTAL HEALTH CARE

McLean is devoted to developing trusting and thoughtful relationships with our patients, their families, and their mental health care providers. Whether built during a crisis or over time, these relationships allow you to turn to McLean when you or your patients need us most.

800.333.0338 mcleansite.org





Medsphere for Rural & Community Hospitals

Join Us At Booth #93!

Regardless of location or size, every hospital deserves reliable, affordable healthcare IT that enables you to thrive and provide high quality care to your community.

Medsphere has been here for rural and critical access hospitals across America all along. Our mission has always been to help providers regardless of size or budget, and we continue to grow to help you meet your most critical needs – whether it's a comprehensive EHR, reliable RCM, cost-effective supply chain management, or trustworthy IT outsourcing solutions.

April 19-21, ALL DAY!

Stop by Booth #93 for a chance to win a pair of JBL earbuds!

All Rural Health Solutions

CareVue EHR

A fully-integrated enterprise EHR that is rapidly deployable and highly interoperable

RCM Cloud

Protecting the financial health of your hospital so you can continue to protect the health of your community is mission critical.

Supply Chain Management

You've already mastered how to do more with less. However, when it comes to supply chain management, an efficient and automated system is crucial to optimizing patient care and revenue.

Physician Relationship Management

Plan, track and measure the effectiveness of liaison activity across key growth initiatives



Learn More:
go.medsphere.com/rural-hospitals



iris telehealth

Telepsychiatry for Health Systems

Expand access to life-saving behavioral health care with telepsychiatry

No turning away patients. No complaints. Just real, good psychiatry

Partnering with Iris Telehealth means your organization will have access to industry experts who will take the burden of building and optimizing an effective behavioral health program off of your health system. The Iris team will work with your organization to identify opportunities to effectively manage psychiatric patient volumes, provide effective psychiatric care in your hospital's emergency department and beyond, and ensure the long-term care of your patients.

As an Iris partner, your health system will experience the following benefits:

- The right provider for your community
- In-depth behavioral health and telehealth expertise
- Best-in-class support to set your organization up for long-term success



Visit our booth to learn about the difference we bring to telepsychiatry!

iristelehealth.com

info@iristelehealth.com

HCS is now the largest provider of stand alone behavioral health records in the United States. The HCS eMR facilitates all aspects of your behavioral hospital(s) eMR needs from clinical workflow to compliance management to operational excellence. HCS eMR is now available as a native web_OS solution to further enhance the user experience and solution deployment. For more information contact: sales@hcsinc.net

Stephen Deino

Collins, Stephen

System

Work

Reports

Leave Patient

Brown, Angie

DOB 05/05/2001

Hospital # PINE5994882

MedRec# AB0050501

Allergies No Known Drug Allergies

Female

Ht 65 in

Diagnoses Opioid abuse with other opioid-induced disorder;Pregnancy related conditions, unspecified, unspecified trimester

BMI 22.5 kg/m^2

Notes

Seizure: Fall: 15 minute checks, Elapenem Risk

Patient

Treatment

Items

Table of Contents

MAR

Orders

Home

Admission

Discharge

Inpatient

Ancillary

Assessment

Table of Contents

B-Tag Audit

Observations

Save

Cancel

Patient Admit Date time 12/01/2020 09:59

Psychiatric Evaluation

Psychosocial Assessment

H & P

Initial Treatment Plan

Master Treatment Plan

Nursing Progress Notes

Group Notes

Physician Progress Notes

Discharge Summary

Master Treatment Plan Display

Reason for Admission

Patient was hospitalized due to passive suicidality with mood lability. She said that she has been suicidal for four days since she left her most recent group home due to inability to pay.

Psychiatric Diagnoses

Opioid abuse with other opioid-induced disorder	Primary Diagnosis	12/01/2020	12:00	F11.188	ICD-10
Pregnancy related conditions, unspecified, unspecified trimester	Secondary Diagnosis	12/03/2020	12:00	O26.90	ICD-10

Add

Show Delete Buttons

Medical Diagnoses

Opioid abuse with other opioid-induced disorder	Primary Diagnosis	12/01/2020	12:00	F11.188	ICD-10
Pregnancy related conditions, unspecified, unspecified trimester	Secondary Diagnosis	12/03/2020	12:00	O26.90	ICD-10

Add

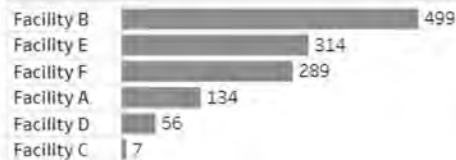
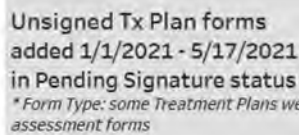
Show Delete Buttons

Psychosocial and Contextual Diagnoses

Opioid abuse with other opioid-induced disorder	Primary Diagnosis	12/01/2020	12:00	F11.188	ICD-10
---	-------------------	------------	-------	---------	--------

Unsigned Forms & Documents

Set date & signature status for form/document type
Click bar to view count by form name



Form Type

☐ Assessment

☒ Tx Plan

Assessment form Date
This year

Form Status:

☐ Pending

☒ Pending Signature

Unsigned Consents
added 1/1/2021 - 5/17/2021
in Pending Signature status



Consent Type
☒ NonMed

Consent Date
This Year

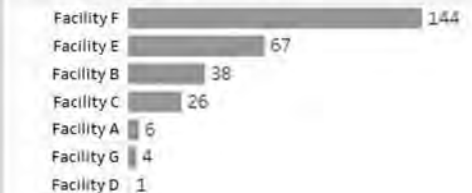
Consent Status:

☐ Accepted

☐ Denied

☒ Pending Signature

Unsigned PDFs
added 4/1/2021 - 5/16/2021
in Pending Signature status



PDF Date

Previous studies

PDF Status

☐ Pending
☒ Pending Signature

IMPROVE PATIENT OUTCOMES



Every aspect of the way your healthcare facility is planned will influence the patient experience. Using evidence-based design, today's Behavioral Healthcare windows can be developed to improve patient outcomes and become part of the therapy.



Sherwood products provide large vision vistas, patient-controlled blinds, and operable security vents for sensory connection to the outdoors. All products are purpose-engineered and tested to withstand over 2,000 ft-lb of human impact energy as per AAMA 501.8.

Trust Sherwood Windows security products to provide safe and therapeutic home-like environments in Behavioral Healthcare facilities all across North America.

 **SHERWOOD
WINDOWS GROUP**

NORTH AMERICA'S LEADER IN SECURITY GLAZING SOLUTIONS

416.675.3262

800.770.5256

sherwoodwindows.com

EXHIBITOR AND SPONSOR INFORMATION

PRESIDENT EXHIBITORS



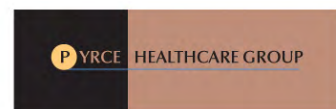
EXECUTIVE EXHIBITORS



PLATINUM SPONSORS



GOLD SPONSORS



We Treat Patients Like People
and Addictions Like Diseases.

Discover how breakthrough innovations and
progressive therapies are helping our patients embrace
the path to lasting recovery.



800-782-1520
pinnacletreatment.com

California | Georgia | Indiana | Kentucky | New Jersey | Ohio | Pennsylvania | Virginia

SAFE AND STUNNING!



OUR GUARDIAN FRAME MAKES PATIENTS FEEL MORE AT HOME WHILE BEING SAFE.

- Safe for behavioral health patients
- Makes spaces feel more comfortable and less threatening
- Ligature resistant design
- 50 years of experience and over 20,000 amazing images to ensure a perfect looking project
- Installation services available worldwide by our full-time, dedicated installation team

BETTER REFLECTION = BETTER OUTCOMES THE HYBRID SAFETY MIRROR WHERE SAFETY AND AN ACCURATE REFLECTION ARE BOTH POSSIBLE.

Our Hybrid Safety mirror delivers the accurate reflection of a home mirror with the strength and safety required for inpatient behavioral health environments. The Hybrid Safety Mirror provides a true reflection as compared to institutional and image distorting stainless steel and Lexan polycarbonate mirrors.



RAO CONTRACT
SALES, INC.

1 800 445 7065
www.rao.com
info@rao.com
94 Fulton St.
Paterson, NJ
07501



Hybrid Safety
Mirror Launch



Rigorous
Abuse Tests



Brookhaven NeuroRehabilitation Network

building a new future

We offer a continuum of nationally-recognized programs and services for those affected by a brain injury and other neurological concerns. If you or someone you love is struggling to overcome the challenges created by a brain injury, contact us—we can help! There is hope for a better life.

NRI Neurologic
Rehabilitation Institute
at Brookhaven Hospital

**BROOKHAVEN
HOSPITAL**

**community
neurorehab**
cnr-iowa cnr-oklahoma

A pioneering program for the post-acute rehabilitation of individuals with neurobehavioral issues that arise from a brain injury, neurological disorders, and related syndromes.

Post concussive and dual-diagnosis programs available as inpatient and outpatient programs in a hospital-based setting.

Community-based neuro-behavioral rehabilitation services supported by a transdisciplinary staff. Our research-based approach offers hope to those recovering from a brain injury.

traumaticbraininjury.net

brookhavenhospital.com

communityneurorehab.com



Oxehealth helps behavioural health providers to **improve staff and patient experience** in inpatient services. We support providers to help **manage risk** and systematically **improve the safety** and **quality** of care they provide, while delivering measurable **financial savings**. Oxevision is a contact-free vision-based patient monitoring and management platform that gives nurses additional insights that support their efforts to plan patient care and intervene proactively.

Clinical impact

Research with our customer partners, who use Oxevision as part of their clinical practice, has found:

Acute inpatient	44% Reduction in self-harm in bedrooms	66% Reduction in bathroom ligatures	26% Reduction in assaults in bedrooms
Senior inpatient	71% Reduction in 1:1 observations related to falls prevention	68% Reduction in transfers to higher level of care	48% Reduction in falls at night in bedrooms

About Oxevision



Oxevision is a contact-free vision-based patient monitoring and management platform for use in inpatient wards. It uses an optical sensor (an infrared sensitive camera) housed in a secure unit installed in the patient's room to provide a patient's pulse rate, breathing rate (chest wall movements), and location and activity based alerts and warnings to clinicians. Oxevision's Vital Signs module received De Novo clearance as a Class II medical device.

Implementing Oxevision in a behavioural health facility can:

- **Increase retention** due to higher staff morale
- **Provide greater staff efficiencies** due to improved incident management and more productive ways of working
- **Improve hiring** through the use of Oxevision as a recruitment tool

Behavioral health providers using Oxevision as part of their daily clinical practice have seen:

92% Reduction in staff stress	71% Reduction In One-On-One Observations Over A One-Year Period, A total savings of 7,800 hours of work in a 24-bed unit
-------------------------------	---

Katrin Engelmann, President Behavioral Health
Katrin.engelmann@oxehealth.com, 786-789-1066
For references or further information, please contact Katrin.
www.oxehealth.com

Read our article on
How Behavioral Health
Providers Can Gain
5 Key Staffing Benefits





TownSteel
PERFECTION IN PROTECTION



DOOR LOCKS REINVENTED



XMRXA 4000



MRX-A



XMRX-A



CRX-A



TRX-L



MRX-L



MRX-K



CRX-K

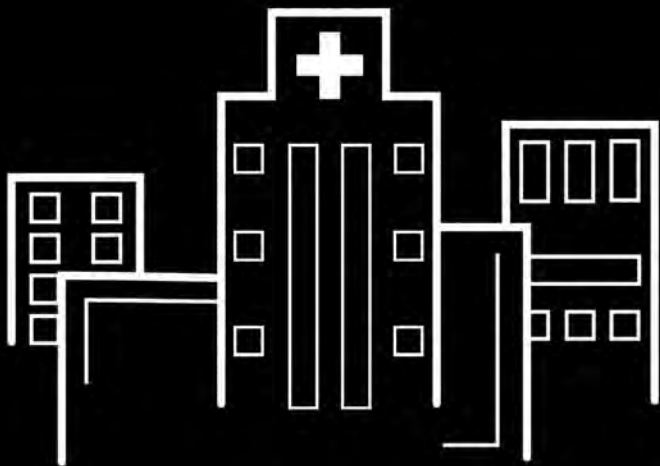
TownSteel, Inc.

17901 Railroad Street, City of Industry, CA 91748
Fax: (626) 965-8919 www.townsteel.com

Toll Free: 1-877-858-0888
sales@townsteel.com

Tel. (626) 965-8917

**Protect
Healthcare
Workers from
Workplace
Violence**



**Outfit them with
an ID Badge
Holder they can
use to Discreetly
Summon
Help**



PINPOINT[®]

Panic Alarm - Nurse Call - q15 Checks
(631) 469-3111 | www.pinpointinc.com



MCLEAN HOSPITAL

McLean Hospital is an international center for psychiatric treatment, training, education, and research. Founded in 1811, McLean is the largest psychiatric teaching hospital of Harvard Medical School and is the top ranked freestanding psychiatric hospital in the United States according to US News & World Report. McLean Hospital is dedicated to delivering specialized care provided by expert, compassionate clinicians in addition to offering groundbreaking research and training that informs and teaches the current and next generation of psychiatric providers. McLean provides state-of-the art clinical care and diagnostic clarification for a wide range of behavioral and psychiatric illnesses and delivers specialized clinical services and programs for children and adults seeking care for anxiety, depression, trauma, borderline personality disorder, OCD, and substance use disorders. For more information, please visit us at mcleanhospital.org or call 800-333-0338.

MEDSPHERE SYSTEMS CORPORATION

Designed to integrate interdependent healthcare disciplines, Medsphere's CareVue EHR is oriented towards both behavioral health and acute care inpatient environments by incorporating functional crossover in support of collaborative team care and patient comorbidities. CareVue applications ensure patient safety and promote effective and essential communication among clinicians through functions like multi-disciplinary treatment planning, automated discharge summaries, HBIPS reporting, and closed-loop medication management. Beyond the CareVue platform, Medsphere enables greater efficiency across the enterprise with robust IT tools and a long menu of health IT consulting and service items that support improved revenue, a reliable supply chain, and better relationships with patients and clinicians. Contact: Rich Lewis, Regional Sales Director, 314-616-2459, rich.lewis@medsphere.com



Hope For A Bright Future



**MENTAL HEALTH &
ADDICTION TREATMENT**
Offering a Full Continuum of Care

**Serving Adolescents, Adults,
Senior Adults, Active Duty
Military, Veterans &
First Responders**

**Inpatient • Intensive Outpatient
Partial Hospitalization
Dual Disorders**

**Addiction Treatment for
Adolescents & Adults:
Detox • Residential
Intensive Outpatient
Medication-Assisted Treatment
Aftercare**

CenterPointe Hospital
4801 Weldon Spring Pkwy.
St. Charles, Missouri 63304
(Just outside St. Louis)

**(800) 345-5407 Toll Free
(636) 477-2136,
Option 1 Admissions**

www.CenterPointeHospital.com

MOORE MEDICAL GROUP

We are hospitalists, providing quality internal medicine at acute psychiatric hospitals and residential living facilities. We are experts at providing care for behavioral health patients, with 15+ years of experience across multiple states. Our hospitalists conduct histories and physicals, patient consults, medication management, infection control, process quality improvement and follow-up care, potentially reducing the need to send patients out and lessening early re-admissions. Additionally, we can partner with facilities for integrated outpatient follow-up, through Caya Health, available to our clients. Visit www.MooreMedicalGroup.com for more information. Contact Stephen Nadeau, Business Development enquiries@MooreMedicalGroup.com or phone (954) 261-2650.

NETSMART

Netsmart, a leading provider of Software-as-a-Service technology and services solutions, designs, builds and delivers electronic health records (EHRs), health information exchanges (HIEs), analytics and telehealth solutions and services that are powerful, intuitive and easy-to-use. Our platform provides accurate, up-to-date information that is easily accessible to care teams in human services and post-acute care markets. We make the complex simple and personalized so our clients can provide services and treatment that support whole-person care. Visit www.ntst.com.

OBSERVSMART

ObservSMART is a proximity-based patient safety and compliance system designed for behavioral health, substance recovery, residential settings and emergency rooms. Our solution improves quality of care by advancing accountability, improving workflow, and creating consistent communication through proactive, real-time reminders and alerts for staff and supervisors. Hundreds of healthcare organizations utilize ObservSMART to validate and document compliance, improve labor constraints, and gain efficiencies, while reducing risks and costs related to adverse patient safety events. ObservSMART offers dynamic reporting for compliance and support of best practices. Our suite

of solutions includes Validated Patient Observations, Constant/1:1 Observations, Environment of Care Compliance, Nurse/Leadership Rounds, and Vitals Compliance. ObservSMART offers full EHR integration or standalone options. For more information, visit our website www.observsmart.com or reach out directly to tkeech@invisalertsolutions.com.

ODD BALL INDUSTRIES

Odd Ball Industries has a history of over 35 years of innovations in the field of ligature-resistant safety products for behavioral health facilities, including many patented designs. Our products are carefully designed with a patient-centric focus that emphasizes patient comfort, ergonomics, and functionality in addition to safety and durability. Odd Ball Industries is also honored to represent HealSafe Interiors in the United States. HealSafe products feature Scandinavian interior design for behavioral health environments. Visit www.oddballindustries.com and healsafeinteriors.com to see pictures, descriptions, data sheets, and more. Phone 631-754-0400. E-mail ckopp@oddballindustries.com.

ON CALL HEALTH

OnCall's workflow automation tools, such as direct insurance billing, and API integration make it easy for providers and administrators to deliver virtual treatment by increasing efficiency through every program workflow. OnCall enables organizations to engage **and connect** with patients in new ways through a patient-facing portal, a digital-first admissions and booking experience, and asynchronous care tools. With OnCall, providers can consistently connect with patients where they are and at any time, increasing compliance and program effectiveness. Ultimately, OnCall's solution offers the modern and efficient virtual care experience that patients and staff expect, helping organizations retain more patients, scale efficiently, and increase revenue. **Contact:** <https://www.oncallhealth.com> | Marketing@oncallhealth.com

OREXO – DIGITAL THERAPEUTICS

Orexo provides a portfolio of digital therapies focused on addressing unmet needs within the growing space

of mental illness and substance use disorders. Orexo's digital therapeutics share several common features such as digitized counseling designed on best practice standards of delivering Cognitive Behavioral Therapy (CBT), products supported by published peer reviewed clinical evidence, digital programs that are highly adaptable to both a patient's personal and clinical situation, and powered to deliver "Individualized therapy" tailored by an artificial intelligence engine. For more information visit our website at www.orexo.com or contact cathy.hoy@orexo.com.

OXEHEALTH

Oxehealth is a global leader in vision-based patient monitoring and management. We help clinicians to deliver safer, higher quality and more efficient care. Our Oxevision platform, including a contact-free optical sensor, delivers clinical insights that enable staff to plan patient care and to intervene proactively to help patients. Our Oxehealth Service supports customers to deliver a step change and then year on year continuous improvement in safety, quality and efficiency. The Oxehealth Service is relied on by one in three English mental health trusts as well as acute hospitals, care homes, skilled nursing facilities, prisons & police forces across Europe. For more information, visit Oxehealth.com or email katrin.engelmann@oxehealth.com.

PHARMERICA HOSPITAL PHARMACY SERVICES

At PharMerica, we pride ourselves on providing exceptional customer service, assisting in containing pharmacy costs and meeting the pharmacy needs for hospitals, rehabilitation facilities, long term acute care hospitals, behavioral health hospitals, and other specialized care centers nationwide. PharMerica serves customers at over 100 locations in both single and multi-hospital systems. From industry leading pharmacy services to maintaining compliance with state and federal regulations, PharMerica enables you and your team to increase efficiency, reduce costs, and provide superior care where it is needed. Customers have access to many resources, including specialized continuing education programs, facility specific reporting, pharmacists who

are trained in dozens of various specialties, and business experts in the pharmacy industry. Sean Morgan, PharmD, Vice President – Business Development, Hospital Pharmacy Services, PharMerica, 805 North Whittington Parkway, Louisville, KY 40222, Cell: 843.457.5770, sean.morgan@pharmerica.com.

PINPOINT, INC.

Workers in the healthcare setting are particularly susceptible to workplace violence. The number of attacks against doctors and nurses is on the rise. According to the [Bureau of Labor Statistics](#), healthcare workers are five times more likely to be injured by workplace violence than other workers, and it's even more common in behavioral healthcare environments. A survey by the [Massachusetts Nurse's Association](#) revealed that 75% of nurses have feared or anticipated violence in the past two years. Workplace violence is a serious threat to the physical and mental health of your staff. Visit www.pinpointinc.com or call (631)469-3111 to see how we can help keep them protected.



Areas of Expertise

- Acquisition & Joint Ventures
- Hospital & Unit Management
- Consultation & Strategic Planning

Michael P. Krupa Ed.D., Principal



Dr. Krupa is Founder and CEO of Health Partners New England and TaraVista and MiraVista Behavioral Health Hospitals. He has provided consultation and management services to over 60 healthcare organizations in 13 states. His approach is to create sustainable organizational health through leadership and team development.

For more information, email Dr. Krupa
mkrupa@taravista.care



Maximize efficiency, increase retention, grow revenue

Designed for behavioural health companies to manage and deliver exceptional telehealth.



Maximize efficiency

Staff easily set up and manage virtual care operations with EHR integrations and workflow automation tools like digital-admissions and insurance verification.

Increase retention

Engage and connect with patients through your white-label patient portal that enhances clinical outcomes and care quality, available in the app store and online.



Grow revenue

Make informed business decisions with real-time data through our analytics and measurement tools, like launching new VIOPs across state lines.

See OnCall in action

Learn how OnCall can transform how your company delivers telehealth.

oncallhealth.com



Relias offers proven solutions to help staff optimize their performance with **effective training and insights** so they can achieve the best outcomes for their clients

STAFF TRAINING

Give your staff the training tools they need to provide person-centered, trauma-informed, and culturally-competent care to those you serve.

COMPLIANCE TRACKING

Get access to data that can improve access to care, services, and appropriate state reporting.

REPORTING

Manage and track all staff requirements, from training to certifications to non-training requirements.



Sheppard Pratt Solutions partners to design, develop, and deliver behavioral healthcare solutions in your community.

Sheppard Pratt has been a leader in providing cutting-edge behavioral health services for over 160 years, and is consistently recognized by *U.S. News & World Report* as one of the nation's top 10 psychiatric hospitals. Our Solutions allow your organization to benefit from our long-standing experience and focus in three core areas:

Consulting Services | Management Services | Development Services

Areas of Expertise:

- Hospital Psychiatry
- Outpatient & Community Services
- Telepsychiatry & Remote Services
- Crisis Care
- Collaborative Care
- Behavioral Health Strategy

solutions.sheppardpratt.org | 410-938-4411





Ligature-Resistant Safety Products

Plumbing Fixtures



SP-12 (w/ A or B Handle)
Diverter Valve



SP-10PB (w/ A or B Handle)
Shower Mixing Valve



SP-11-GDK
Grid Drain Kit w/
Vent System

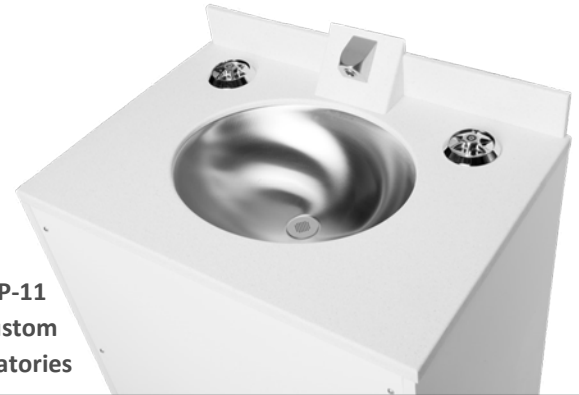
SP-7WC
Quick Connect
Hand Shower



SP-7
Shower Head



SP-11
Custom
Lavatories



Bath Accessories

White Anti-Microbial Powder Coat Or Metallic Finish



SP-3V-SC
Vertical Grab Bar



SP-4--SS
Recessed Shelf



SP-3-SC
Horizontal Grab Bar



SP-13-SS
Recessed Soap Dish



SP-5-SS
Recessed TP Holder



SP-14
Multi-Fold Paper Towel Dispenser

Patent Pending

PO Box 376
Greenlawn, NY 11740

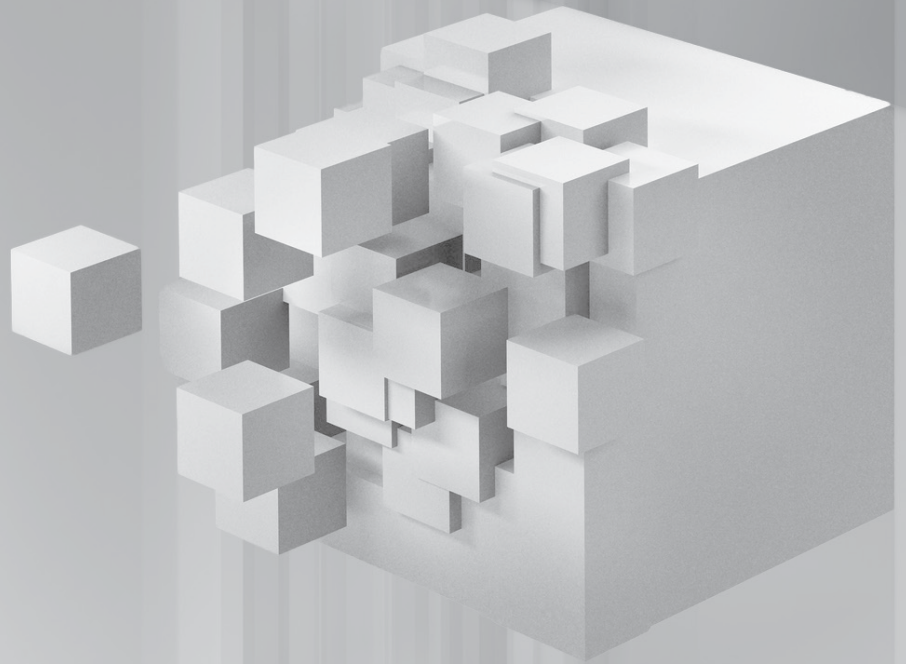
631-754-0400
ckopp@oddballindustries.com

Proud Representative Of

Scandinavian
Design for
Safe & Healing
Environments

HealSafe
Interiör

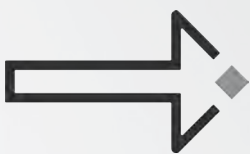
Shaping the future of behavioral healthcare through technology



Behavioral healthcare is at a crossroads. As access to care improves and the stigma around seeking care is reduced, organizations are being challenged with staffing shortages. Today, behavioral healthcare organizations need intuitive solutions that integrate and streamline access to critical patient information, allowing clinicians to spend more time focusing on patient care and less time worrying about compliance and documentation.

WellSky believes in the mission and essential importance of behavioral health.

Only WellSky supports both business success and better patient outcomes through easy to use, data-driven, scalable solutions that power meaningful insights for behavioral health organizations like yours.

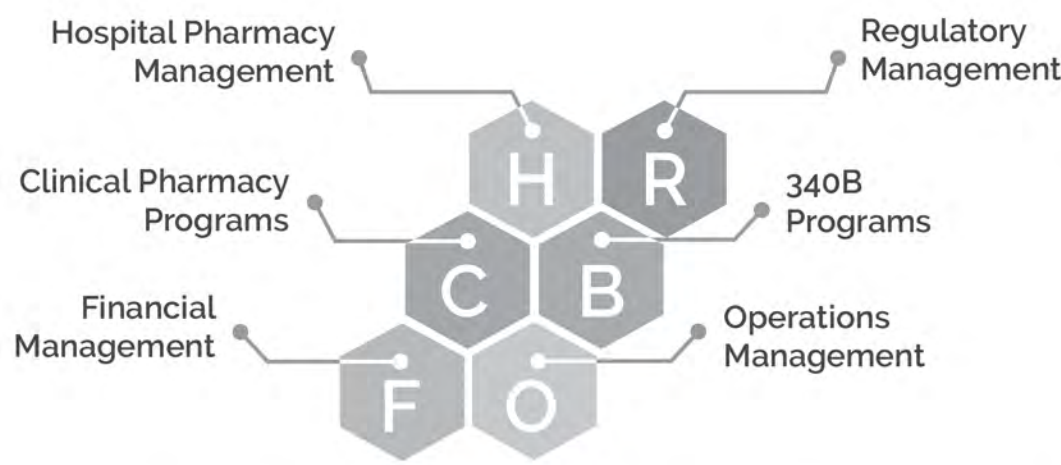


Learn why some of the largest behavioral health and human services organizations choose WellSky as their technology partner for their future success.

wellsky.com/demo | 1-855-wellsky | sales@wellsky.com



We've got hospital pharmacy services down to a science.



PharMerica Hospital Pharmacy Services helps contain pharmacy costs and provides exceptional service to meet the needs of 100+ locations in single and multi-hospital systems, including rehabilitation, long-term acute-care, and behavioral health hospitals and other specialized care centers.

Learn more at pharmerica.com/who-we-serve/hospitals



PharMerica®

Hospital Pharmacy Services

Streamline

Healthcare Solutions

Since 2003, Streamline has focused exclusively on the Behavioral Health and Human Services market. Streamline's SmartCare™ is an enterprise EHR platform that integrates all service lines, including inpatient, outpatient, and residential, into a single cloud-based system.

SmartCare™ R6 EHR Platform

*Taking the behavioral health EHR
user experience to a new level.*



Individualized | Work Faster

R6 empowers each user to individualize SmartCare's interface and functions to their unique needs.



Intuitive | Work Better

R6's interface, processes and workflows intuitively mirror how behavioral health users serve their clients in the real world.



Intelligent | Work Smarter

R6 turns information into contextual insights so users have the intelligence they need at their fingertips to make more informed decisions.

Learn more: streamlinehealthcare.com



PYRCE HEALTHCARE GROUP

Pyrce Healthcare Group (PHG) is a national healthcare consulting firm, founded in 1990, specializing in behavioral health. The firm specializes in strategy, strategic planning, business development, market research, strategic partnerships, integrated delivery systems, and management/organizational development. PHG offers significant depth of resources, with direct involvement of experienced senior staff. Clients include hospitals/healthcare systems, health care companies, academic medical centers, human service agencies, physician/allied practices, professional/trade associations and investor groups. The firm has assisted over 350 organizations with locations in over 40 states.

Jan Pyrce, Founder and Managing Partner/Pyrce Healthcare Group / E-mail: jpyrce@pyrcehealthcare.com Website: www.pyrcehealthcare.com Phone: (630) 726-3388.

RAO CONTRACT SALES, INC.

RAO (est. 1971) is a provider of custom framed artwork and mirrors specifically designed for use in general and behavioral healthcare environments. RAO also offers large scale vinyl wall graphics, canvas, frameless acrylic, and other decorative wall items. All our products are made in our Paterson, New Jersey location to ensure on time delivery and high quality. info@rao.com, 800-445-7065

RELIAS

Give your staff the strategies, support, and confidence to make a difference in the lives of clients with mental health issues. For behavioral health and substance use treatment organizations, including Certified Community Behavioral Health clinics, changing regulations, variable funding and staff burnout can be ongoing challenges. Relias offers proven solutions to help your staff optimize their performance with the most effective training and data insights so they can achieve the best outcomes for their clients. For more information, please reach out to solutions@relias.com.

RUTGERS UNIVERSITY BEHAVIORAL HEALTH CARE

Rutgers Health University Behavioral Health Care (RUBHC) provides a myriad of programs to address behavioral, addiction and physical health with individuals, families and communities throughout their lifespan. Services include all levels of care, such as inpatient, outpatient, community-based programs, integrated physical and behavioral health and 24-hour national peer help lines. RUBHC is dedicated to advancing the science through programmatic research and educating the current and next generation of health care professionals. A leader in correctional health care providing physical, behavioral health, dental and sex offender treatment services to those involved in the New Jersey criminal and juvenile justice systems. www.ubhc.rutgers.edu, Access Center (800) 969-5300, accesscenter@ubhc.rutgers.edu.

SHEPPARD PRATT

[Sheppard Pratt](#) is the largest private, nonprofit provider of mental health, substance use, developmental disability, special education, and social services in the country. A nationwide resource, Sheppard Pratt provides services across a comprehensive continuum of care, spanning both hospital- and community-based resources. Since its founding in 1853, Sheppard Pratt has been innovating the field through research, best practice implementation, and a focus on improving the quality of mental health care on a global level. Sheppard Pratt has been consistently ranked as a top national psychiatric hospital by *U.S. News & World Report* for more than 30 years.

SHERWOOD WINDOWS GROUP

Sherwood Windows has dedicated its focus on the behavioral healthcare market for over a decade. With the express objective of *improving patient outcomes*, Sherwood has developed purpose-designed security window systems dedicated to enhancing behavioral healthcare facilities. Large vision vistas, patient operable blinds for privacy and shading control, secure ventilation for sensory connections to the outside, and a home-like design help *make the window part of the therapy*. Our AAMA 501.8 tested and proven systems have been specified and used in facilities across North America. Contact us at www.sherwoodwindows.com, info@sherwoodwindows.com, 1-800-770-5256.

STREAMLINE HEALTHCARE SOLUTIONS

Since 2003, Streamline has focused exclusively on the Behavioral Health and Human Services market. We understand that organizations in this market need more than just another EHR vendor. We are a trusted partner in building innovative technology solutions that empower people to improve the quality of life for those in need. SmartCare™ is a next-level Enterprise EHR platform for the Behavioral Health and Human Services market that is individualized, intelligent, and intuitive. Contact Paulette Slaughter (paulette.slaughter@streamlinehealthcare.com) for more information about our next-level EHR, SmartCare™, or [visit our website](#).

STRYKER

Mental Health departments can place unique demands on hospital employees. Stryker has worked to create a solution with features that help to satisfy these demands and increase security within these specific units when partnered with specialized hospital processes. In addition to the specialized security features that can be added to Spirit beds, all beds have a 10.75-inch low bed height. This low height helps to significantly reduce fall injuries and help accommodate patients to create a more secure sleeping environment. Contact your Stryker representative for more information about our mental health offerings. <https://www.stryker.com/us/en/portfolios/medical-surgical-equipment/bedframes/specialty-beds.html>

TOWNSTEEL, INC.

TownSteel, Inc., is a leading U.S. manufacturer of Ligature Resistant locks, meeting the critical needs of the Behavioral Health market. Our 5-point Ligature Resistant product line delivers the most advanced innovations available in today's market, designed to enhance personal safety. The ADA approved Arch Mortise MRX-A, Cylindrical Arch CRX-A, and the new electronic RFID/touch pad XMRX-A 2000, 4000, 5000 BL/RIFID are Joint Commission approved and recommended. TownSteel also manufactures levered Mortise MRX-L and Cylindrical TRX-L Ligature Resistant Locks. TownSteel is a full line hardware manufacturer, for more information, please contact us at www.townsteel.com or toll free **877-858-0888**.

VIDERA HEALTH

Videra Health is a reimbursable remote patient monitoring platform that digitizes traditional clinical assessments for easier distribution, gathers rich qualitative patient data using video, and scales provider and care team efforts. Patients can use Videra upon intake, in-between traditional or tele-health visits, as well as post discharge. Providers and health teams are then proactively alerted when a patient varies from baseline metrics or experiences excess emotional distress. Videra integrates with many systems and technologies making it a perfect addition to current clinical workflows. The founding team brings 30 years of video analytics experience and a strong understanding of clinical operations and systems. Reach out to contact@viderahealth.com for additional information and to engage with our team.

WELLSKY

WellSky Specialty Care for Behavioral Health is an integrated solution that delivers comprehensive, end-to-end functionality supporting the entirety of your operations on a single platform. Our scalable healthcare information system is designed to improve the clinical, financial, and operational functions of your inpatient behavioral health hospital by leveraging valuable insights across your organization. WellSky includes advanced functionality, purpose-built for behavioral

health providers, including a built-in accountability record that allows staff to complete patient rounding on mobile devices. Learn why WellSky is the fastest growing electronic health system in the behavioral health space by visiting our website: wellsky.com/behavioral-health-systems. You can also contact us at 1-855-WellSky or at sales@wellsky.com.

WHITEHALL MFG

Whitehall Manufacturing manufactures and markets high-quality plumbing fixtures and accessories for healthcare markets, including a variety of products specially designed for ligature resistance, bariatric support, and infection control. The new BestCare® Dignity Suite® package is a convenient collection of ligature-resistant fixtures and accessories for behavioral healthcare applications. Research shows that patients heal better when in a welcoming environment, and the non-institutional aesthetics of BestCare products align with these goals. Customization options, including touchless faucets and antimicrobial additives, can help meet infection prevention goals. Whitehall Manufacturing Email: info@whitehallmfg.com, Website: www.whitehallmfg.com, Phone: (626) 968-6681.

YALE NEW HAVEN PSYCHIATRIC HOSPITAL

Yale New Haven Psychiatric Hospital, in affiliation with Yale School of Medicine's Department of Psychiatry, is internationally recognized as a leader in clinical care, research and education. We innovate patient care through a breadth of specialists, advance the field of behavioral health through groundbreaking research, and train the next generation of leaders. As part of Yale New Haven Health System, our mission is to provide inpatient, outpatient and Interventional Psychiatric Services to meet every individual's unique need – from children to the elderly. Our overarching goal is to enable patients to return to their families and communities with dignity and hope. ynhh.org/psychiatric



flourish

At CannonDesign, our best work often begins with a client's extraordinary vision and a blank sheet of paper. Learn how our partnership with Sheppard Pratt brought bold ambition to vivid reality—creating a first-of-its-kind platform for delivering integrated mental health services.

Visit nabh.cannondesign.com / Password: *flourish@NABH*



Cultivating Care Collaboration, Everywhere.

WE CONNECT THE DISCONNECTED,

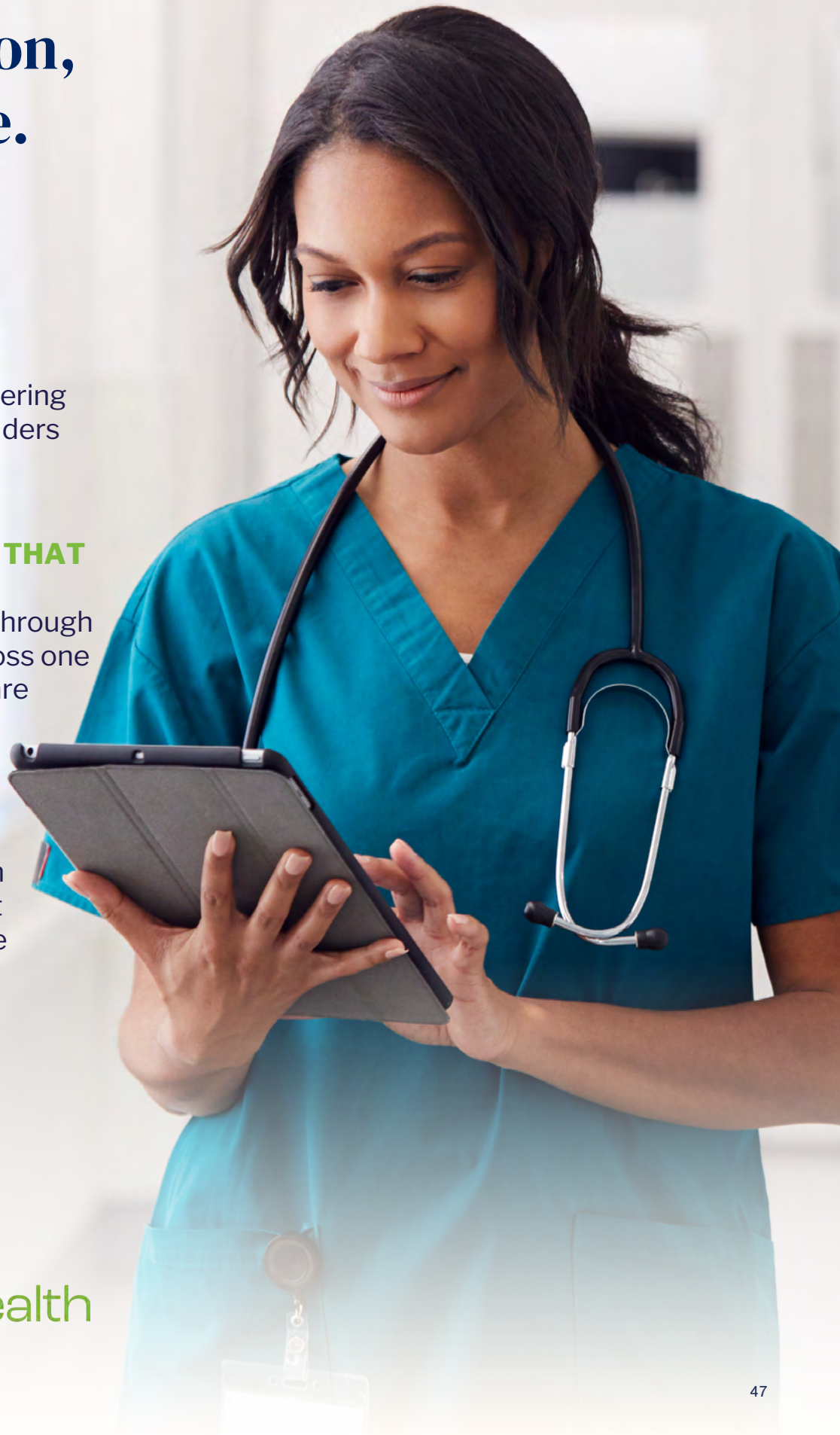
filling data gaps and fostering communication for providers and payers.

WE ENABLE ACTIONS THAT REDUCE COSTS

and improve outcomes through true interoperability across one of the nation's largest care collaboration networks.

WE INFORM THE UNIFORMED,

equipping providers with a more complete patient picture to improve whole person care.





RUTGERS

University Behavioral Health Care

Providing evidence-based behavioral health and addiction services to individuals and families across New Jersey and across the lifespan.

Educating the next generation of behavioral health and addiction professionals.

Advancing the science through research.

The Right Care, at the Right Time, in the Right Location

Call (800) 969 – 5300
to schedule an appointment

Visit ubhc.rutgers.edu
to learn more about our services

The image depicted contains models and is being used for illustrative purposes only. Janssen Global Services, LLC. © JCS 2018



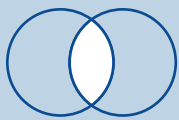
Creating a future where disease is a thing of the past.

We are Janssen, the Pharmaceutical Companies of Johnson & Johnson. Bold thinkers. Big dreamers. Fearless advocates on behalf of patients. So that one day, the world's most daunting diseases will be found only in the pages of history books. Learn more at www.janssen.com.

janssen  Neuroscience

PHARMACEUTICAL COMPANIES OF *Johnson & Johnson*

Ligature-Resistant Behavioral Health Bed™



Fully Electric:

Designed for dual-diagnosis patients



Clinical Advantages:

Trend/reverse trend, 7.5" deck low, electric head, knee, and high/low



Enhanced Security:

Keyed lockout controls, encased wiring, security screws



Learn More:

sizewise.com/safety

MPR-0050E-0721

Sizewise®
Designed to heal